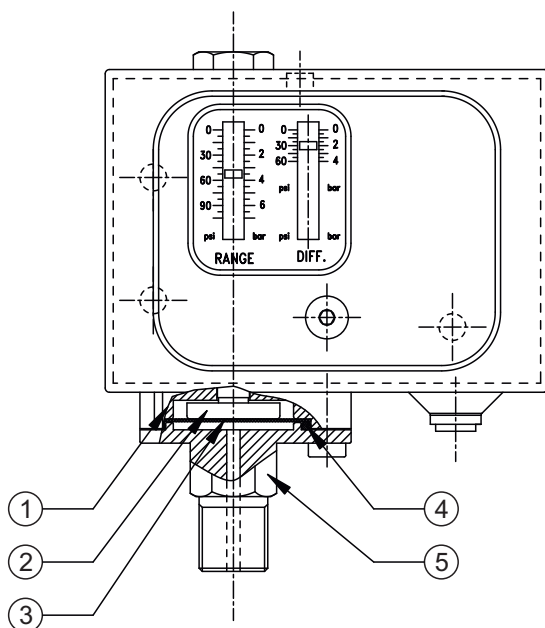


# KU OEM HIGH RANGE PRESSURE SWITCHES



## PRESSURE CAPSULE DETAILS

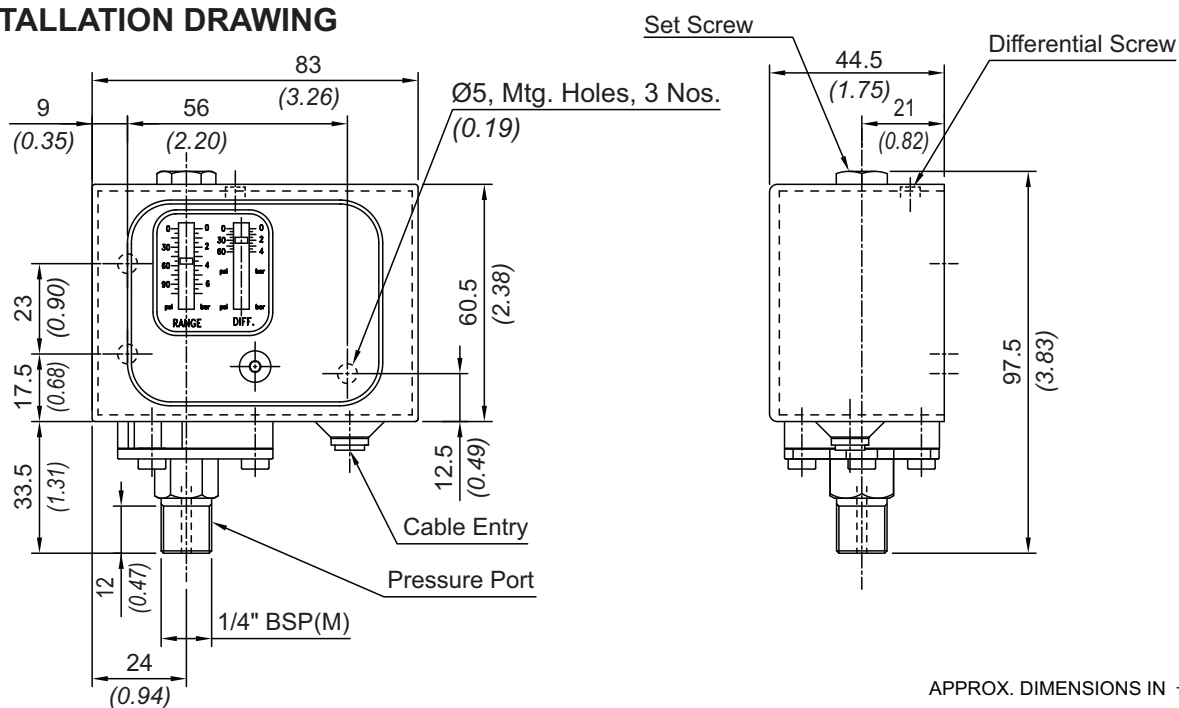


### No. Description

1. Disc
2. Plunger
3. Diaphragm (PTFE®)
4. 'O' ring (PTFE®)
5. Pressure Housing (SS316)

Note : *wetted parts* are mentioned in italics.

## INSTALLATION DRAWING



APPROX. DIMENSIONS IN  $\frac{\text{mm}}{\text{inches}}$

## General information:

KU series pressure switches are housed in pressed steel powder coated enclosure and are recommended for panel mounting or indoor service. The repeat accuracy is better than +/-1.5 % FSR, Pressure port is 1/4" BSPM standard.

## Features:

- Compact
- SS316 & Teflon as standard wetted parts
- Electrical Rating : 15A, 125/250 VAC, 5Amp 30VDC
- Pressure port : 1/4" BSPM

## Range Selection Table

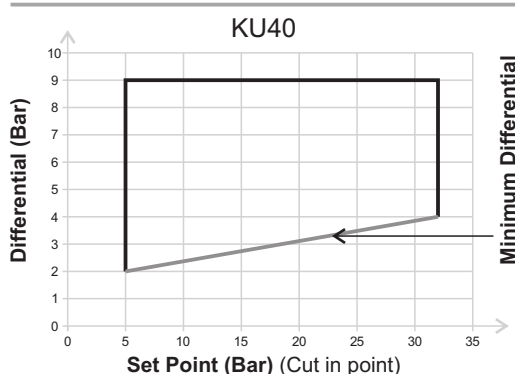
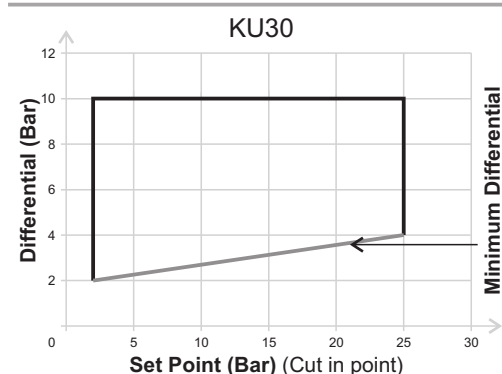
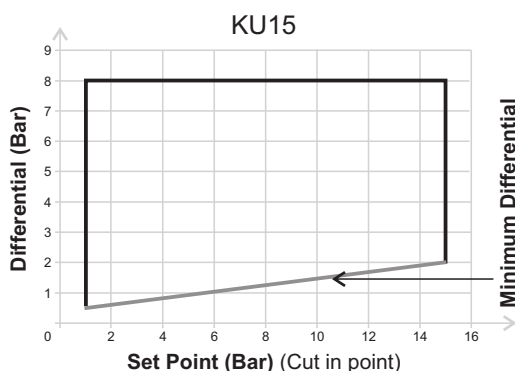
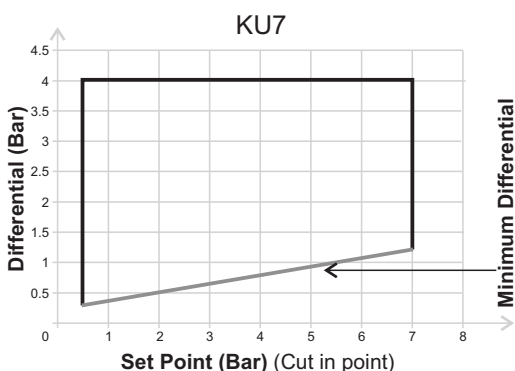
Model	+ Range Bar (psi)	*Adjustable Differential bar (psi)	Maximum Working Pressure bar (psi)
KU7	0.5 - 7.0 (7.25 - 101.50)	1.2 - 4.0 (17.40 - 58.00)	12 (174.00)
KU15	1.0 - 15.0 (14.5 - 217.5)	2.0 - 8.0 (29.0 - 116.0)	25 (362.5)
KU30	2.0 - 25.0 (29.01 - 362.5)	3.0 - 10.0 (43.5 - 145.0)	35 (507.5)
KU40	5.0 - 32.0 (72.5 - 464.0)	4.0 - 9.0 (58.0 - 130.5)	42 (609.0)

\*Minimum Differential increases with Setpoint

## HOW TO ORDER KU OEM HIGH RANGE PRESSURE SWITCHES

Please specify model number as per range selection table above.

## Graph of Set Point Vs Differential:



— Minimum Differential  
— Adjustable Differential

**Note :** Cut out = Cut in + Differential